

LSD Deputy Report

August 22 – August 30, 2012

Ron Lauzé

SAD Calendar

Scheduled Accelerator Down

Login

◀ Week 34 2012 ▶

View ATLis Work Map Help

Key

Good Plan	Tentative Plan	Major Event	Incomplete-Task
Lock Up	Utility Interruption	Radeon Group	Special Support
Subset	New/Changed	ATLis Task	

	Sun	M	T	W	T	F	Sat
34	2012-08-19	20	21	22	23	24	25
Owl	LSD: Napier	LSD: Suhring	LSD: Suhring	LSD: Suhring	LSD: Lauze	LSD: Lauze	LSD: Lauze
Day		<ul style="list-style-type: none"> CHL#1 Cooling Twr S/NLinac U-Tubes NL CM maint S&A: EArc 2A 1R stand delivery RF WG pen. repair TC removal 	<ul style="list-style-type: none"> CHL#1 Cooling Twr LO TS & loads NLinac U-Tubes NL CM maint S&A: 1S baseplates EArc 2A align 1R stand inst RF WG pen. repair BSY Dump Pump TS Tunnel leak repair iocin2 to 3.14 Tour: CERN SRF 	<ul style="list-style-type: none"> CHL#1 Cooling Twr TL Vacuum Maintenance NL CM maint EArc 2A align S&A: 1R Stand QA SL RF WG stone Tunnel leak repair iocin2 to 3.14 	<ul style="list-style-type: none"> CHL#1 Cooling Twr S&A: OLDR bolts RT vlv sft seal PM TL Vacuum Maintenance NL CM maint 1R stand assembly SL RF WG stone S&A: SLinac 2B align Arc10 4m inst iocin2 to 3.14 Tour: Site Office 	<ul style="list-style-type: none"> CHL#1 Cooling Twr S&A: OLDR bolts RT vlv sft seal PM TL Vacuum Maintenance 1S+ formwork 1R stand inst S&A: SLinac 2B align SL CM maint iocin2 to 3.14 S&A: QC XB light guide 	
Swing							
35	2012-08-26	27	28	29	30	31	01
Owl	LSD: Lauze	LSD: Lauze	LSD: Lauze	LSD: Lauze	LSD: Lauze	LSD: Lauze	LSD: Lauze
Day		<ul style="list-style-type: none"> CHL#1 Cooling Twr S&A: OLDR bolts SL CM maint TL Vacuum Maintenance NL Cryo Pipe Mods 2R Lifting Plates 1R bolt torque S&A: SLinac 2B align Linac U-Tube PM/mods RT vlv sft seal PM iocin2 to 3.14 S&A: QC XB light guide 	<ul style="list-style-type: none"> CHL#1 Cooling Twr SL CM maint TL Vacuum Maintenance NL Cryo Pipe Mods 1R bolt torque S&A: 1R Stand align S&A: SLinac 2B align Penetration Repairs Linac U-Tube PM/mods RT vlv sft seal PM Replace RT valve stem iocin2 to 3.14 Tour: Stand vendor 	<ul style="list-style-type: none"> CHL#1 Cooling Twr SL CM maint TL Vacuum Maintenance NL Cryo Pipe Mods 1R stand inst 1R stand align S&A: SLinac 2B align Penetration Repairs 2R B-com Id tst Linac U-Tube PM/mods RT vlv sft seal PM Replace RT valve stem 	<ul style="list-style-type: none"> CHL#1 Cooling Twr OLDR stand inst SL CM maint TL Vacuum Maintenance NL Cryo Pipe Mods EArc 2A align 1R girder inst S&A: SLinac 2B align Penetration Repairs WARC gate inst Linac U-Tube PM/mods RT vlv sft seal PM Replace RT valve stem TC removal Tour: Legislative Liaisons 	<ul style="list-style-type: none"> CHL#1 Cooling Twr OLDR stand inst SL CM maint TL Vacuum Maintenance NL Cryo Pipe Mods EArc 2A align 1R magnet inst S&A: SLinac 2B align Penetration Repairs Linac U-Tube PM/mods RT vlv sft seal PM Replace RT valve stem Tagger wall inst 	
Swing							

Summary

- CHL transfer line seal PM progressing nicely
- Arc3 dipole installation - all OK
- S&A (SLinac 2B, 1R+ stands) going well
- Penetration subcontractor on site
- SRF Vacuum recovery continues, per plan
- Chiller pump controller water damage
- Opsnet switch swap out - no problem
- Did anyone mention a significant rain event?



Arc3A dipole installation

RTL Shield O-rings





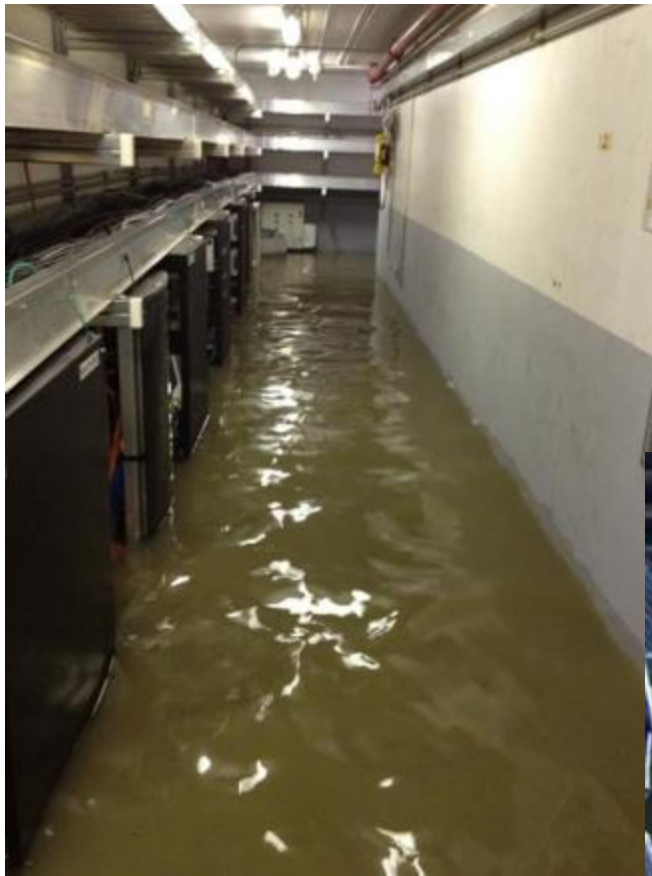
1R+ stand alignment

2L09 penetration repairs





Flood waters at
Forklift Shed



Hall A Labyrinth

Hall B cables





Hall C flooded, again



Hall C detail